

# How to Install or Update EstiPC

This guide describes how to download and install EstiPC from [www.estipc.com/download](http://www.estipc.com/download)

Follow these instructions to download EstiPC for evaluation before purchasing, add EstiPC to an additional computer or update a previous installation.

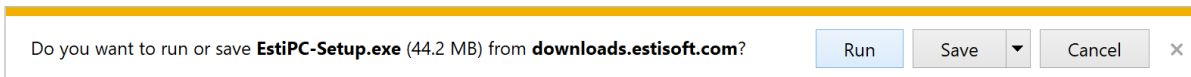
If you're updating an older version of EstiPC it's important to save and close all projects first. Your previous projects, data and settings will be retained.

## Downloading

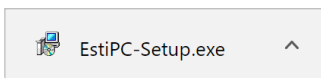
On a Windows PC, use your web browser (Microsoft Internet Explorer, Microsoft Edge, Google Chrome, etc) to go to [www.estipc.com/download](http://www.estipc.com/download) then click on the green download arrow at the top right of the Download And Install section. Click the arrow just once and the download should begin.



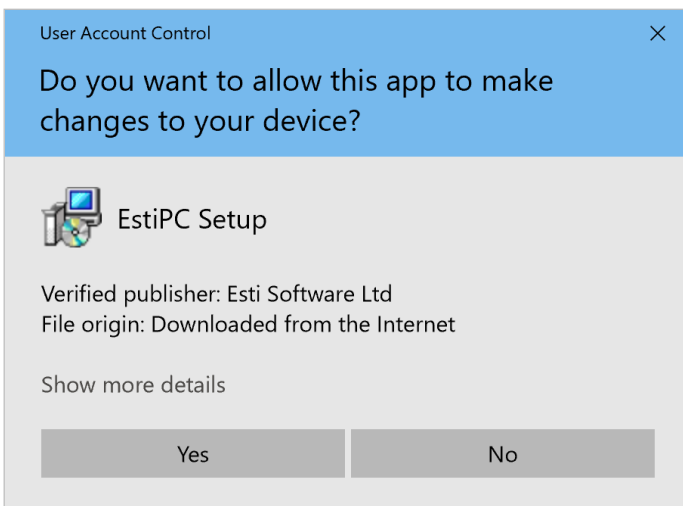
In some browsers the download will appear at the bottom of the browser window. In others it will appear in a popup window. If you're prompted, click on Run.



A download progress indicator will usually be shown. Downloading should take less than a minute if you have a reasonable internet connection speed. When the download is finished you may need to click on it to start installing the application.



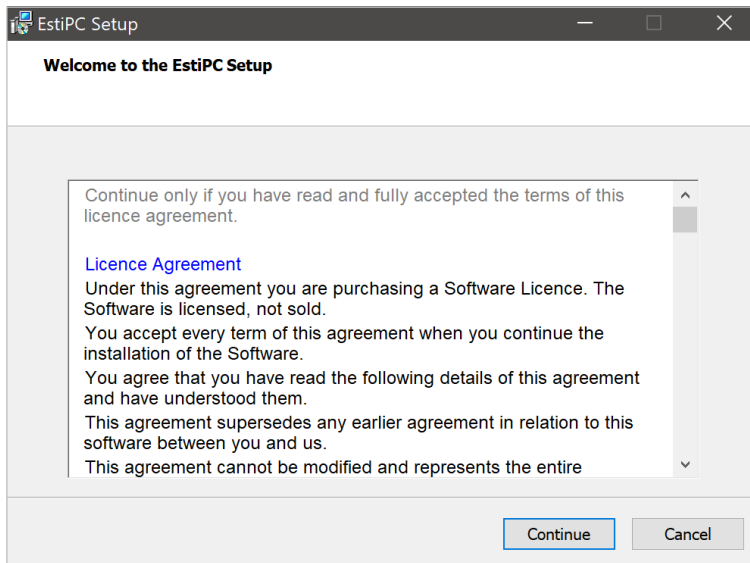
The downloaded file name, EstiPC-Setup or EstiPC-Setup.exe, may be shown. If you've already done this a few times before, the download file name may be suffixed with a number. Choose the highest number if several choices are presented.



If you see a User Account Control popup window, click Yes to allow EstiPC to be installed. If you're not an admin user you'll be prompted to enter or select an admin account and enter the password or PIN for that account. You may need to consult your colleagues or IT support staff to obtain these account details.

## Installing the Application

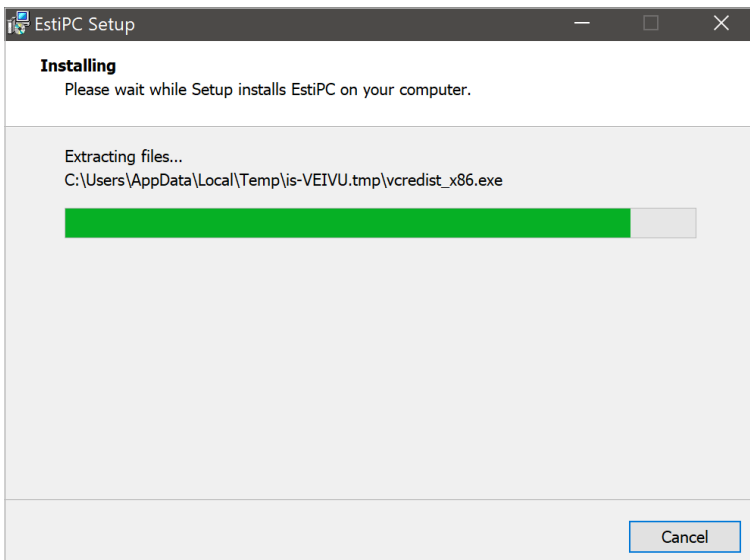
Once the download has finished and been opened the installation sequence will begin...



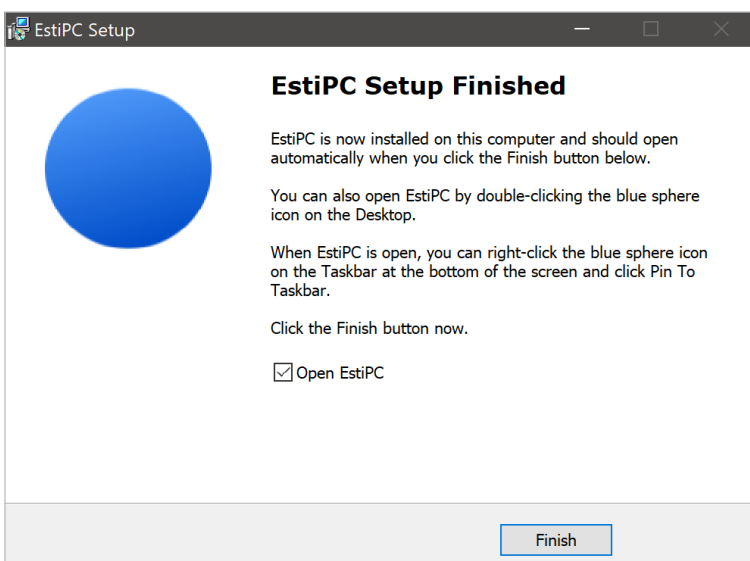
On the Welcome page, read through the Licence Agreement, scrolling down through all of the text.

If you cannot accept any part of the licence, click the Cancel button.

If you do fully accept the licence, click the Continue button.



Wait for the installation to complete. The final stage can sometimes take a few minutes.



When you see the Setup Finished page, click on the Finish button.

The Installer will close and EstiPC will open.

If you're updating an earlier version of EstiPC that's all you need to do.  
If your company uses EstiPC on more than one computer, it's best to update every one. A few parts of a project saved in the latest version of the software may be lost if the project is subsequently opened in an earlier version on another computer.

## Registering the Software

If you're installing EstiPC for the first time, on a computer where it hasn't been used before, you'll see a Registration box...

Enter your full Name, your Company and your Email address.

Select one of the options and enter any additional information at the bottom of the box.

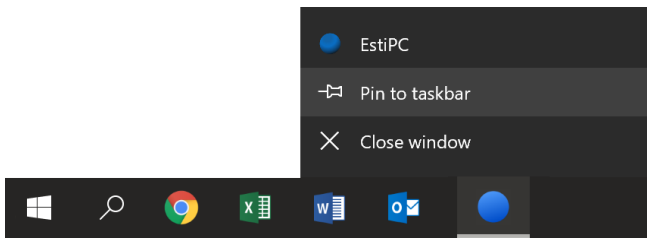
Then click on the OK button.

EstiPC will attempt to log these registration details over the internet. You'll see a message stating the registration expiry date, which is typically between one and two months later. If you're transferring a licence, or adding an extra licence, this expiry date will be extended once the registration details have been reviewed.

If it's not possible to log your details over the internet, you'll see an Auto Registration Error message including a four digit Computer ID. You'll then need to contact us by email at [contact@estipc.com](mailto:contact@estipc.com) quoting your full Name, Company and the four digit Computer ID. You'll receive an email reply with an Access Code and details of how to use it.

Until the registration is completed, EstiPC will operate in Unlicensed Mode and automatically open an example project. In this mode you'll be able to do everything except save changes to projects.

## Keeping EstiPC on the Taskbar



When EstiPC is open, its blue sphere icon will be shown on the Taskbar at the bottom of your desktop.

You can opt to keep it on the Taskbar to make it easier to open next time. Right-click the EstiPC icon and select Pin To Taskbar.

The EstiPC blue sphere icon will also appear on your Desktop and Windows Start menu.

## Sharing Projects and Data

You can set up EstiPC to share projects and data (codes, suppliers, favourite lines, delivery addresses, order number and invoice number sequences) between multiple computers.

If you're using a file server in a networked office, see the guide [Sharing Projects and Data using a Server or NAS Drive](#) for details of how to set this up.

If you don't have a server, or if you frequently work away from the office, you can use a cloud service like Dropbox or Google Drive to share projects and data. See the guide [Sharing Projects and Data using a Cloud Service](#) for details of how to set this up.

It's worth doing this as soon as possible, before you start working separately. You may want to get your IT support company involved.

### Getting More Help

Once everything's set up, please have a look at our Quick Start Guides for an introduction or reminder of how it all works...

- [Estimating, Specifying And Reporting](#)
- [Purchasing](#)
- [Client Invoicing](#)

For additional detailed Guides on specific topics, click the links on the right side after each section or see the web page...

- [EstiPC Guides](#)

Alternatively, email us with your questions at...

- [support@estipc.com](mailto:support@estipc.com)